



VINDHYA HOMES PVT. LTD.
PRESENTS

KAILASH

A PEACEFUL ABODE

2BHK APARTMENTS AT SAIDAPET



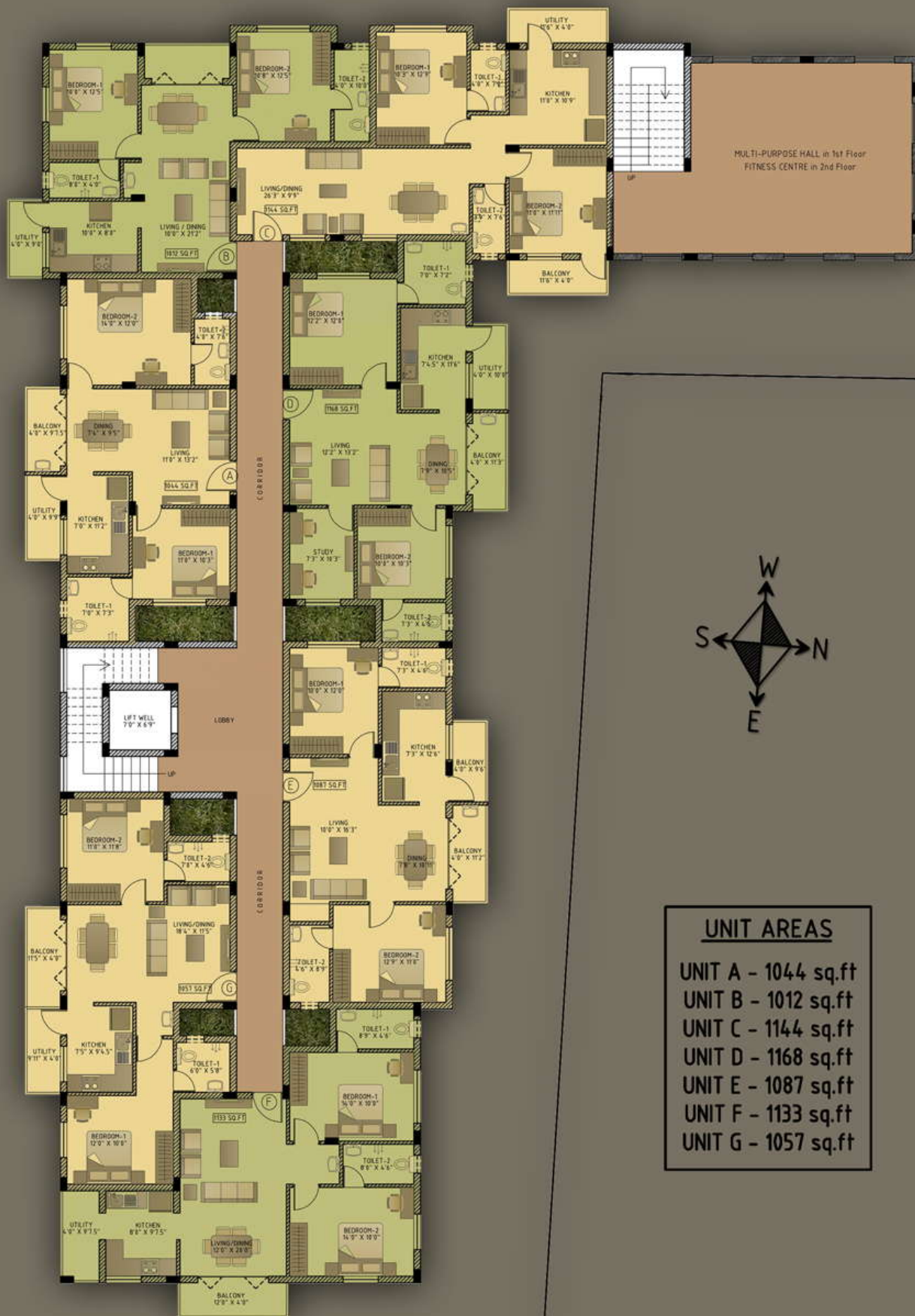


SHEET TITLE

**SITE
LOCATION**

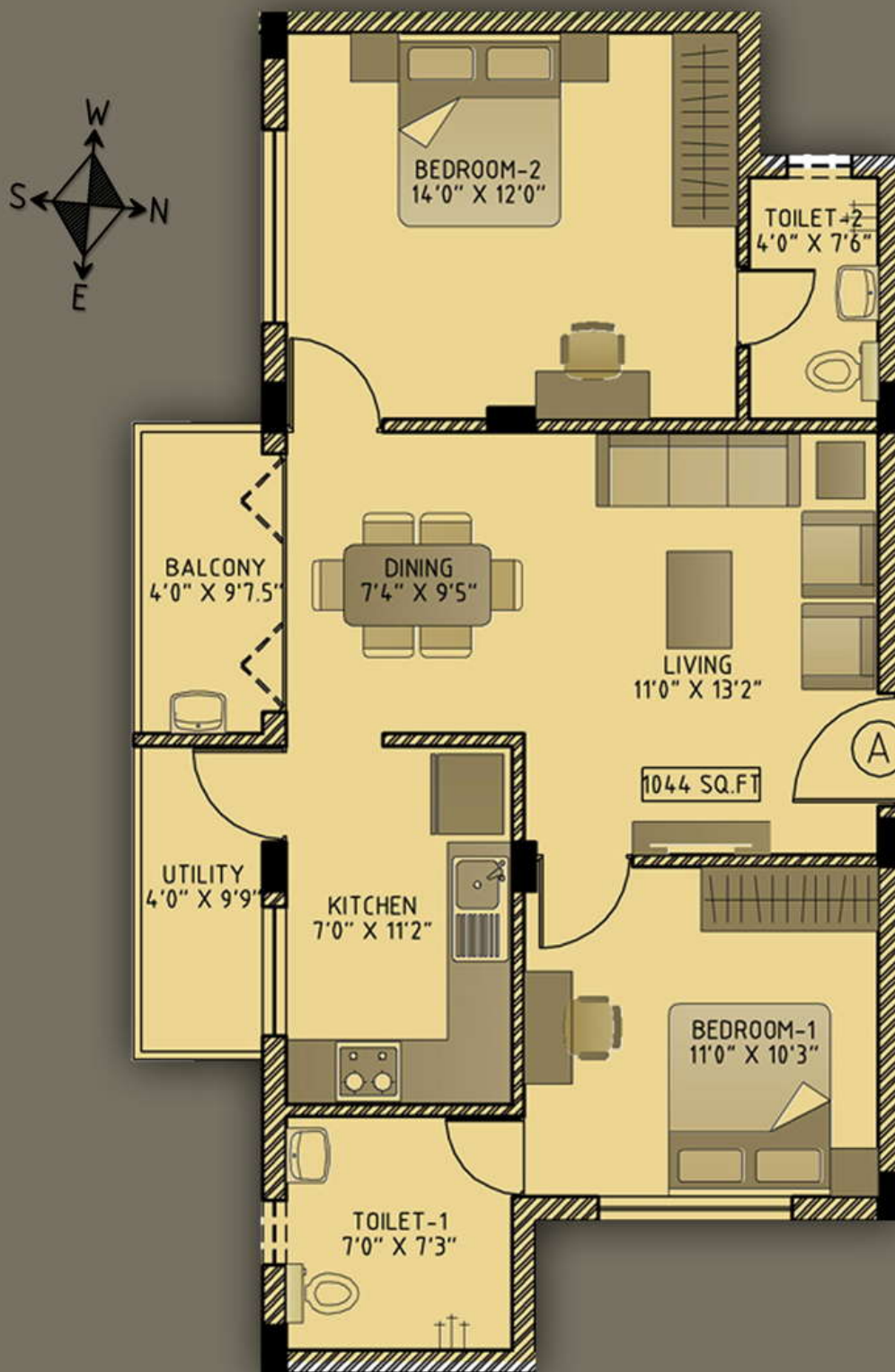
BUILDERS & PROMOTERS
VINDHYA HOMES PVT. LTD.

ARCHITECTS
CIRCUS ARCHITECTS



UNIT AREAS

UNIT A	- 1044 sq.ft
UNIT B	- 1012 sq.ft
UNIT C	- 1144 sq.ft
UNIT D	- 1168 sq.ft
UNIT E	- 1087 sq.ft
UNIT F	- 1133 sq.ft
UNIT G	- 1057 sq.ft



UNIT AREA
1044 sq.ft

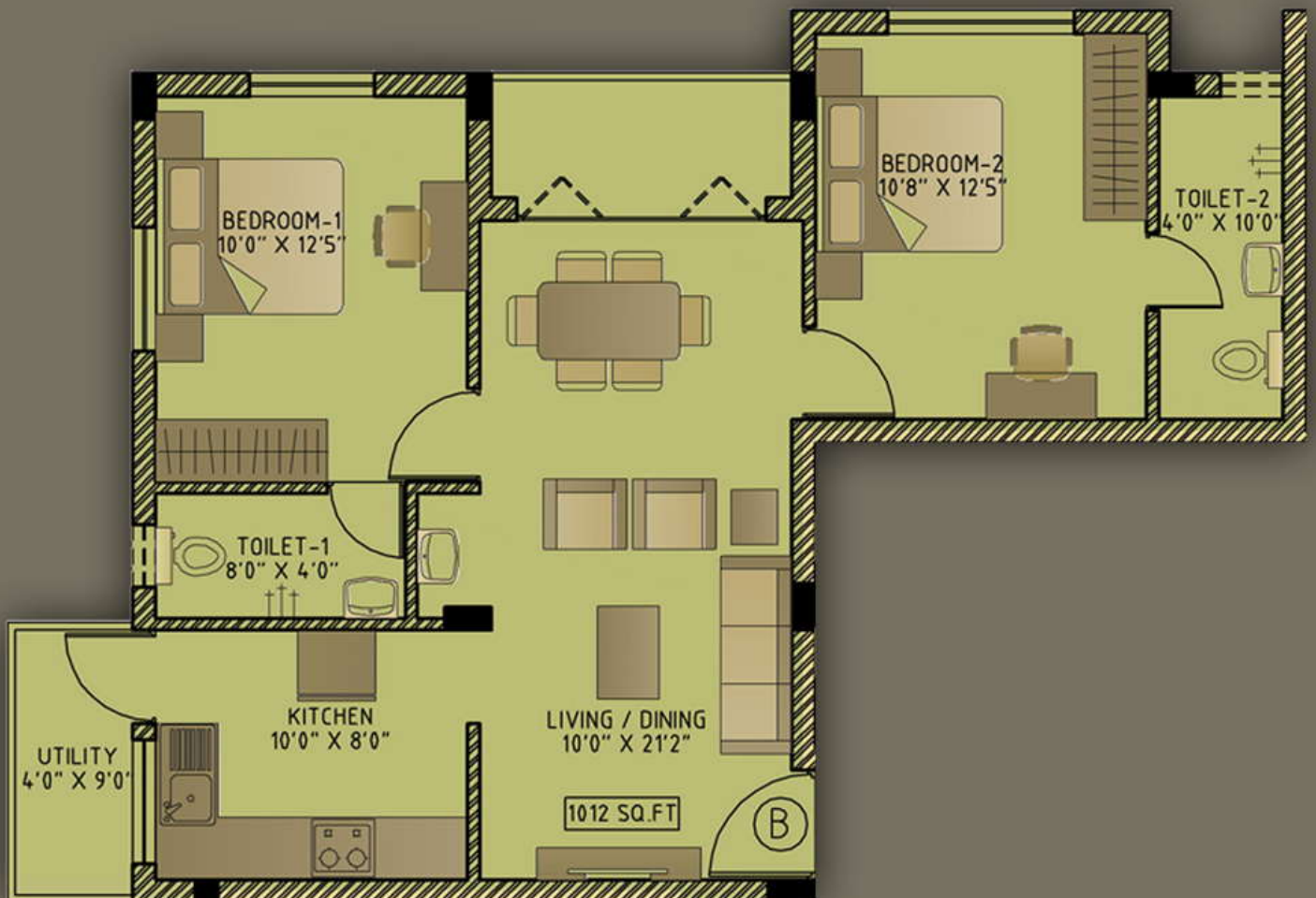
UDS
502 sq.ft

SHEET TITLE

UNIT - A
FLOOR PLAN

BUILDERS & PROMOTERS
VINDHYA HOMES PVT. LTD.

ARCHITECTS
CIRCUS ARCHITECTS



SHEET TITLE

UNIT - B
FLOOR PLAN

BUILDERS & PROMOTERS
VINDHYA HOMES PVT. LTD.

ARCHITECTS
CIRCUS ARCHITECTS



UNIT AREA
1144 sq.ft

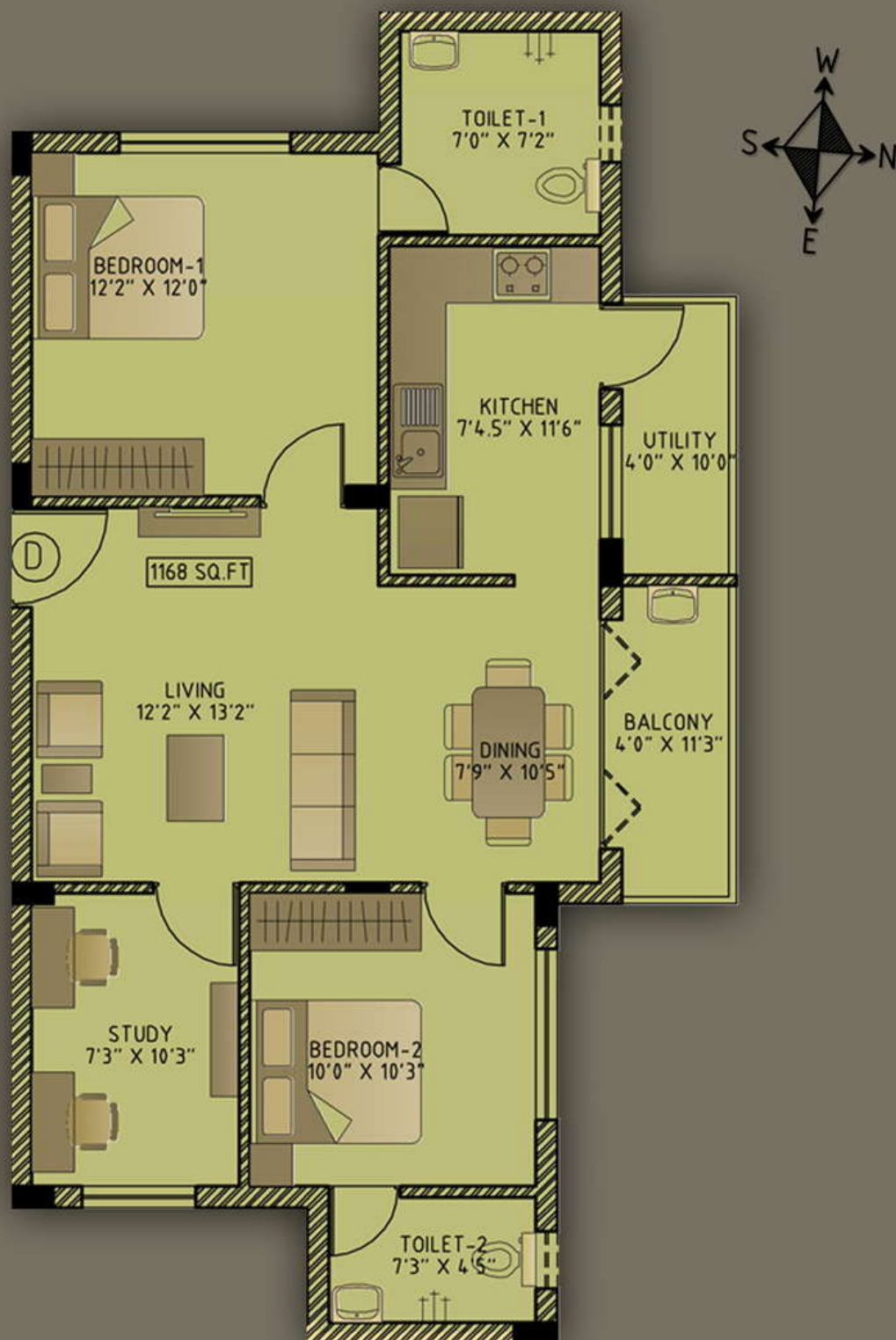
UDS
550 sq.ft

SHEET TITLE

UNIT - C
FLOOR PLAN

BUILDERS & PROMOTERS
VINDHYA HOMES PVT. LTD.

ARCHITECTS
CIRCUS ARCHITECTS



UNIT AREA
1168 sq.ft

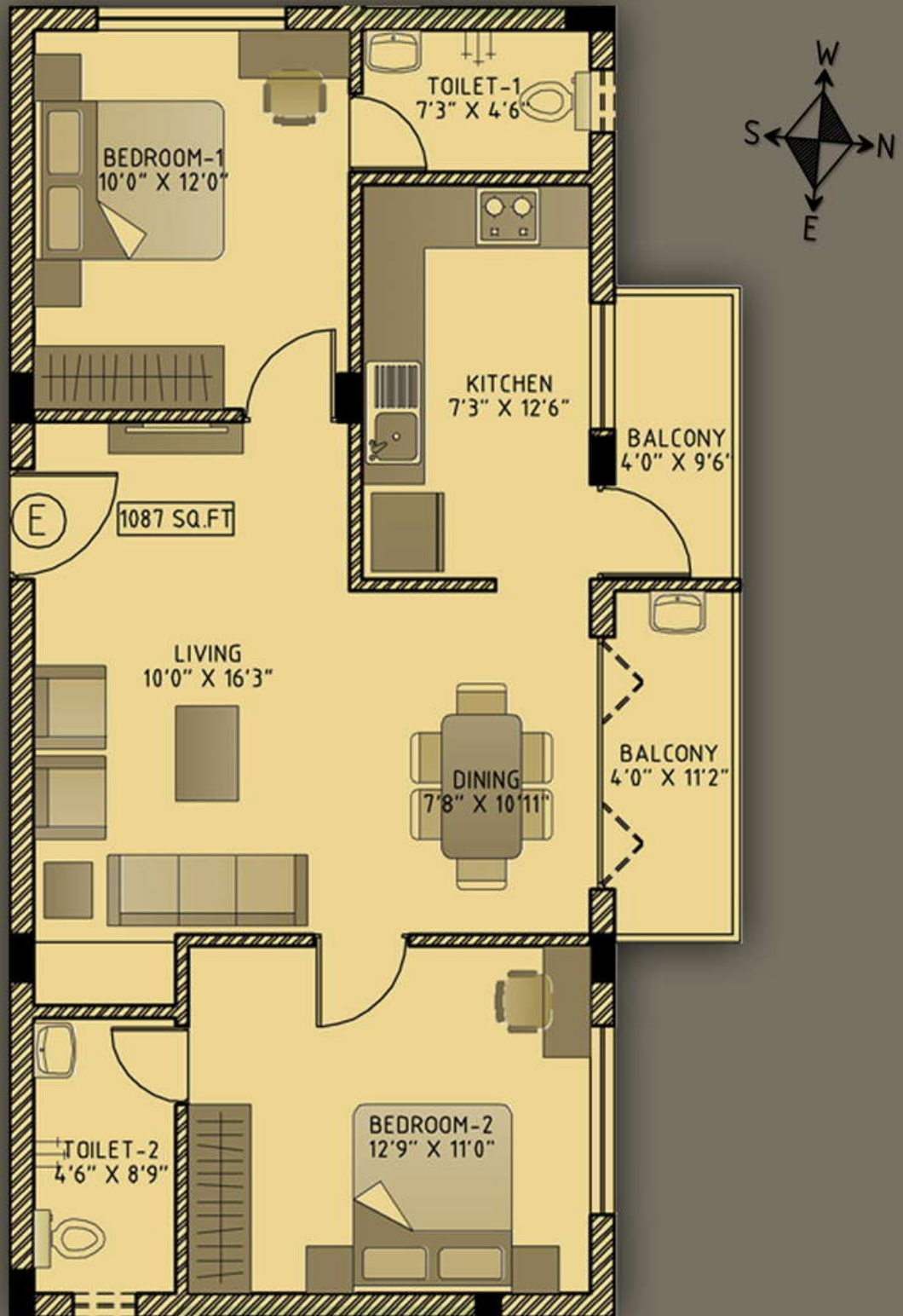
UDS
562 sq.ft

SHEET TITLE

UNIT - D
FLOOR PLAN

BUILDERS & PROMOTERS
VINDHYA HOMES PVT. LTD.

ARCHITECTS
CIRCUS ARCHITECTS



UNIT AREA
1087 sq.ft

UDS
523 sq.ft

SHEET TITLE

UNIT - E
FLOOR PLAN

BUILDERS & PROMOTERS
VINDHYA HOMES PVT. LTD.

ARCHITECTS
CIRCUS ARCHITECTS



UNIT AREA
1133 sq.ft

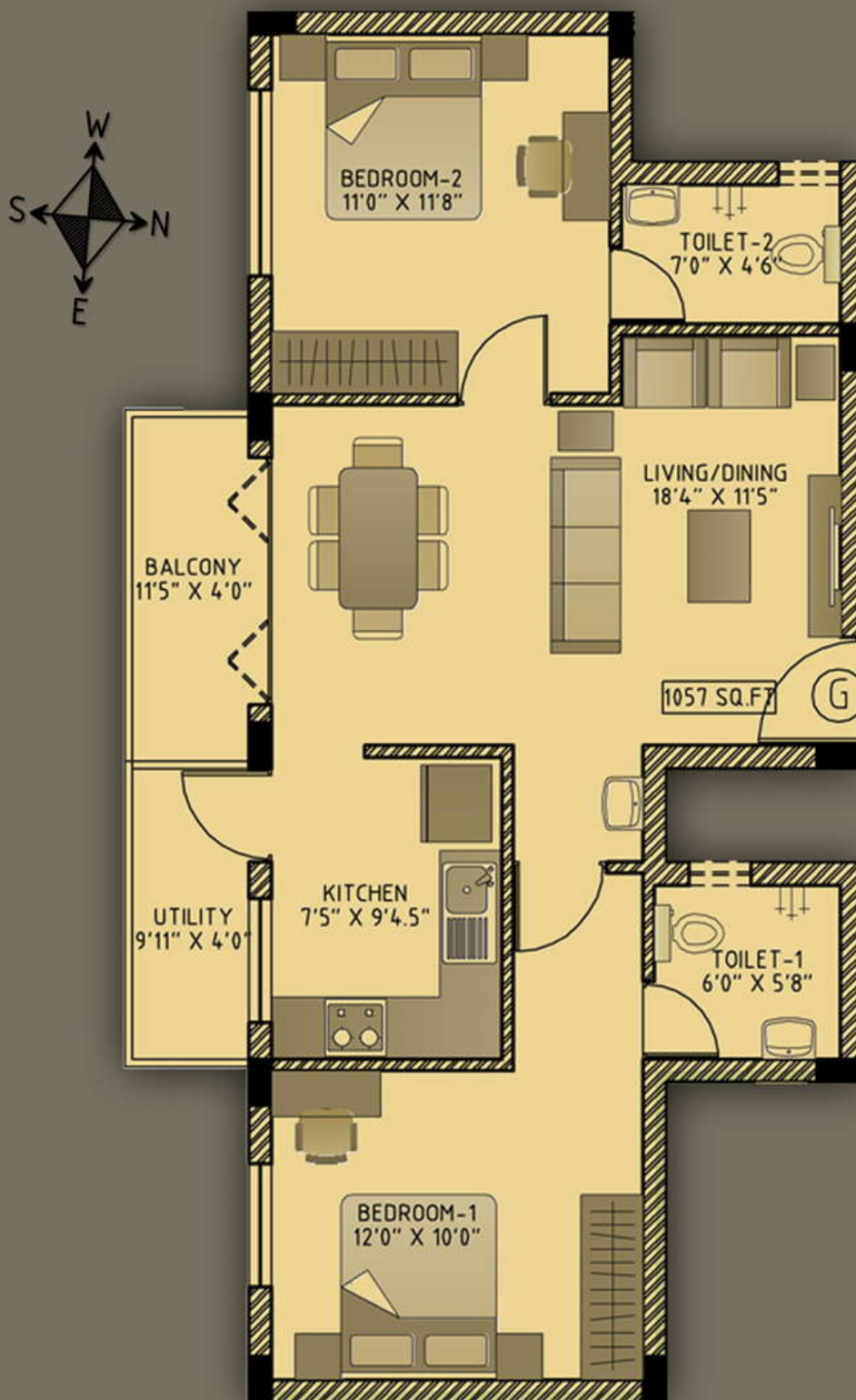
UDS
545 sq.ft

SHEET TITLE

UNIT - F
FLOOR PLAN

BUILDERS & PROMOTERS
VINDHYA HOMES PVT. LTD.

ARCHITECTS
CIRCUS ARCHITECTS



UNIT AREA
1057 sq.ft

UDS
509 sq.ft

SHEET TITLE

UNIT - G
FLOOR PLAN

BUILDERS & PROMOTERS
VINDHYA HOMES PVT. LTD.

ARCHITECTS
CIRCUS ARCHITECTS

2BHK APARTMENTS AT THE  OF CHENNAI

KAILASH
A PEACEFUL ABODE



SHEET TITLE

**3D VIEW
OF
BUILDING EXTERIOR**

BUILDERS & PROMOTERS
VINDHYA HOMES PVT. LTD.

ARCHITECTS
CIRCUS ARCHITECTS



health & fitness
GYMNASIUM
air-conditioned environment

indoor games
MULTI-PURPOSE HALL
air-conditioned environment



latest play equipments
KIDS PLAY AREA
safety measures

relaxing lounge
ROOF TOP GARDEN
soft & hard landscape



STRUCTURE

R.C.C framed Stilt car park + IV floors structure. 9"thk Brickwork for External walls and 4.5"thk Brickwork for Internal walls with Plastering on both sides.

DOORS

Engineered Doors as per Architects' design with seasoned Teak Wood frames. Veneer finished doors for Bedrooms. Water proof flush doors for Toilets & Balconies. Melamine matt finish for Main door and Bedroom doors. All other Doors in satin enamel paint finish.

WINDOWS

UPVC Windows with integrated mosquito mesh shutters. Grills for safety will be provided for all windows.

FLOORING

3'x3' Vitrified Tiled Flooring for Living and Dining. Laminated wooden flooring for Master Bedroom.

2'x2' Vitrified Tiled Flooring for all other Bedrooms and Kitchen. Rustic series or anti-skid ceramic tiles for balconies and Utility. Granite Slabs for staircase areas.

TOILETS

A combination of Glass Mosaic tiles & Glazed ceramic Tiles for Toilet Walls upto ceiling in all toilets.

C.P fixtures – Jaquar (continental series) with wall mixers and health faucets in all Toilets. Sanitary ware – Parryware/Hindware.

PAINTING

Interior Walls in Premium Emulsion Paints (ASIAN) with smooth putty finish. Exterior Walls with ASIAN APEX/ACE Exterior Emulsion Paints.

ELECTRICAL

Fire-retardant cables - (FINOLEX / ORBIT). Premium Modular switches - (CRABTREE/LITASKI). Concealed Telephone and Television points in living and all bedrooms. A/C power points in all bedrooms. Washing machine point will be provided in the utility. Ample lighting and power points as per the architects layout.

INTERIORS**KITCHEN**

Modular kitchen with Granite counter top. MOUK (Spain) Glass paneling up to 7' height above cooking counter. Provision for Refrigerator, Aqua-Guard, Microwave, Electric Chimney, Food processor and Grinder.

WARDROBES

Functionally designed Wardrobes in all bedrooms with premium finish.

GENERAL

- Round – the – clock security with intercom facility.
- Video-door phone calling bell.
- Pipe-lined gas for all apartments.
- 24 hrs Power back up for all common areas.
- Inverter power back up for 7 lights & 4 fans in each apartment.
- Drivers/ Servants toilet.
- Water-proofing at all necessary areas of the building.
- Anti-termite treatment at different stages of construction.

CONTACT US



VINDHYA HOMES PVT. LTD.

104, Prasad Street, Dr.Seethapathy Nagar,
Velachery, Chennai-600 042.

Ph: 044-65318182 | Fax: 044-43213181
Mobile: 9940353535

Email: vindhyahomes@gmail.com
Website: www.vindhyahomes.com